



CITY OF CAPE TOWN  
ISIXEKO SASEKAPA  
STAD KAAPSTAD



Produced by Enterprise and Investment and  
Organisational, Policy and Planning Departments:  
Directorate of the Mayor

For more information on this industrial area contact:  
Economic.Research@capetown.gov.za



- |   |   |  |
|---|---|--|
| <ul style="list-style-type: none"> <li>● Accommodation and food service activities</li> <li>● Administrative and support service activities</li> <li>● Agriculture, forestry and fishing</li> <li>● Arts, entertainment and recreation</li> <li>● Construction</li> <li>● Education</li> <li>● Electricity, gas, steam and air-conditioning supply</li> <li>● Financial and insurance activities</li> <li>● Human health and social work activities</li> <li>● Information and communication</li> <li>● Manufacturing</li> <li>● No activity</li> </ul> | <ul style="list-style-type: none"> <li>● Other service activities</li> <li>● Professional, scientific and technical service activities</li> <li>● Public administration and defence, compulsory social security service activities</li> <li>● Real estate activities</li> <li>● Transportation and storage</li> <li>● Unattainable</li> <li>● Vacant unit</li> <li>● Water reserve</li> <li>● Water supply, sewerage, waste management and remediation activities</li> <li>● Wholesale and retail trade, repair of motor vehicles and motorcycles</li> <li>● IRT bus stops</li> </ul> | <ul style="list-style-type: none"> <li>■ Road reserve</li> <li>■ Under construction</li> <li>■ Vacant land</li> <li>■ Private residence</li> <li>■ Suburbs</li> <li>■ Land parcel</li> <li>■ Greenbelt</li> <li>■ Open space</li> <li>■ Vacant building</li> <li>■ Wetlands</li> </ul> |
|---|---|--|



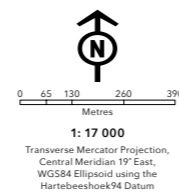
# Blackheath Industria | 2017



THIS MAP WAS COMPILED BY:  
**CITY MAPS**  
Development Information and GIS  
Tel: +27 21 487 2711  
Fax: +27 21 487 2821  
city.maps@capetown.gov.za

Please note:

- Business names, economic activity and contact details were collected through primary data collection.
- Business contact details were verified directly from the business' website.
- In the event that the name or economic activity of a business could not be identified during primary data collection and it does not have an active website or contact details available to confirm business details, it has been listed as unattainable.



INDUSTRIAL SURVEY  
**BLACKHEATH  
INDUSTRIA**

Making progress possible. Together.

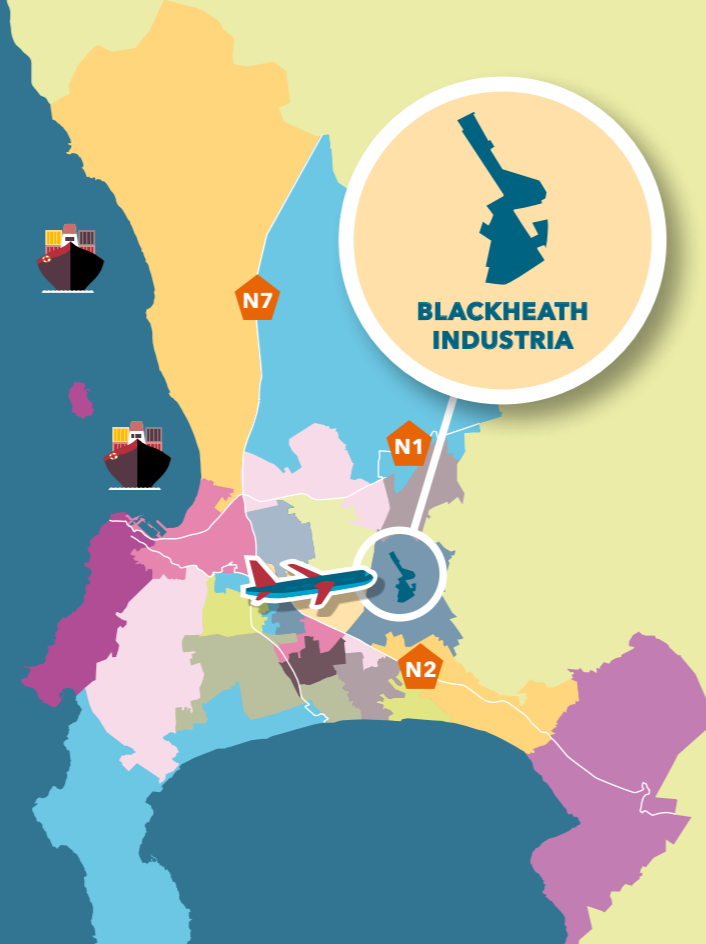
## BLACKHEATH INDUSTRIA AT A GLANCE

Blackheath Industria, the industrial hub situated in close proximity to the R300 as well as the N2 and N1 highways. Blackheath Industria is considered one of the fastest growing industrial areas in the Metro, with lots of potential for growth and great infrastructure.

Blackheath Industria is mapped across 607 land parcels of which 83% or 505 land parcels are occupied by economic activity and the remaining 17% or 102 land parcels are not.

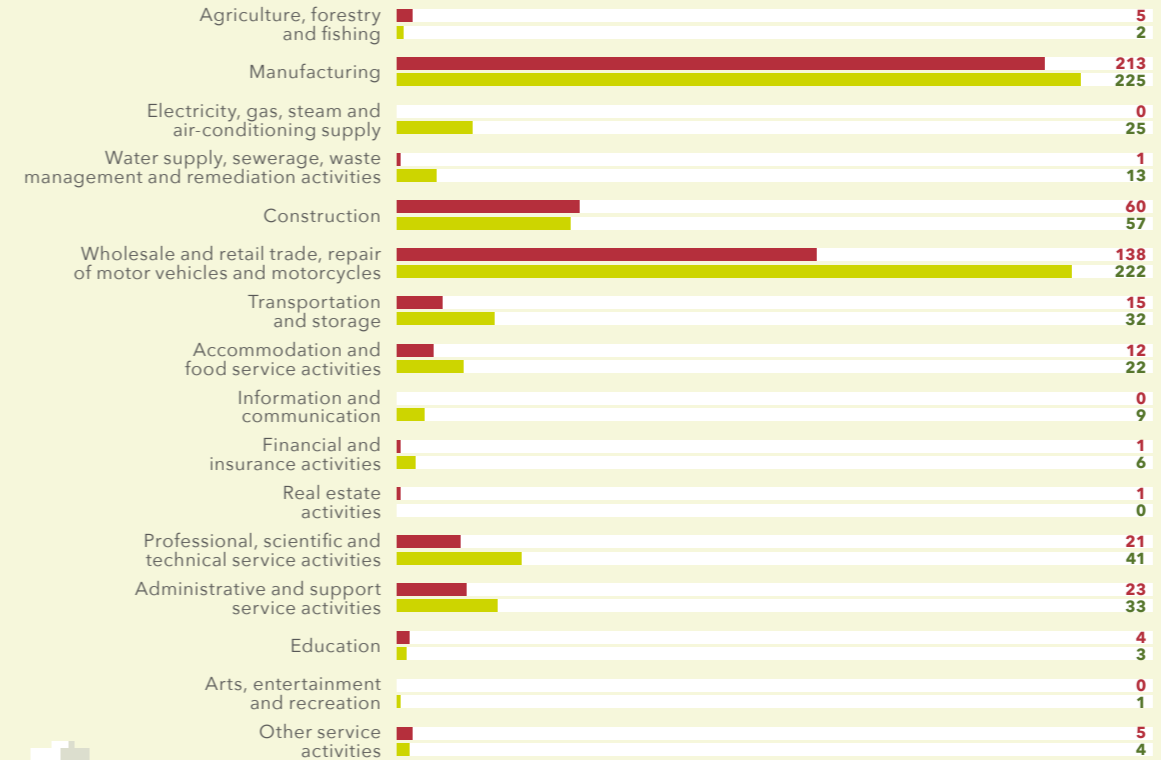
The 505 land parcels that are economically active in the Blackheath Industrial area host approximately 695 businesses. Of the 695 businesses, only 659 of the total businesses' economic activity could be identified while 36 businesses' could not.

**607 LAND PARCELS** | **695 BUSINESSES**



## TREND IN ECONOMIC ACTIVITY BETWEEN 2014 AND 2016

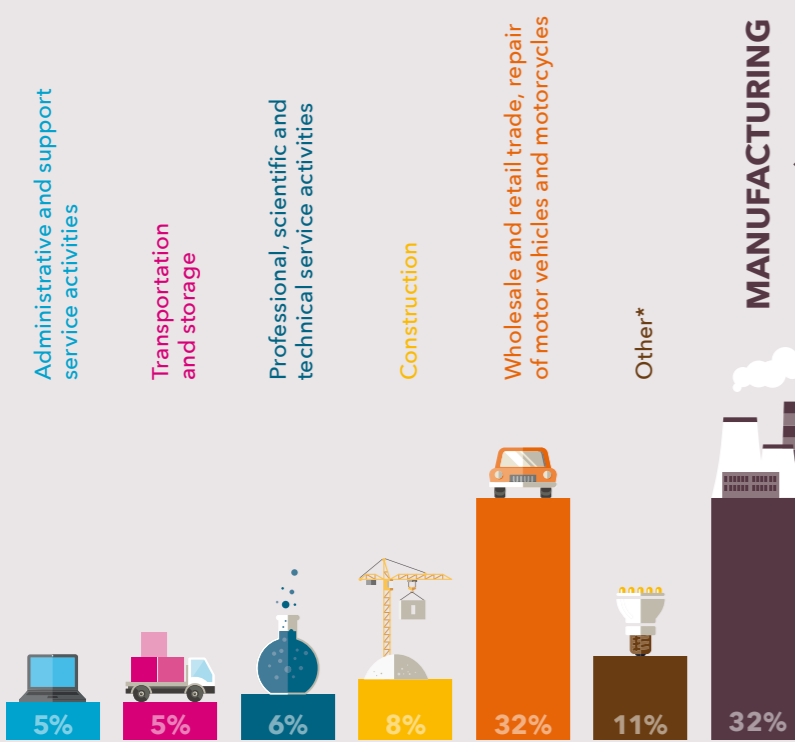
### NO. OF BUSINESSES: 2014 VS 2016



Industrial area boundaries are subject to change over time so caution must be exercised in interpreting increases or decreases in the number of businesses per sector over the period.

- Agriculture, forestry and fishing**  
DECREASED BY 3
- Electricity, gas, steam and air-conditioning supply**  
INCREASED BY 25
- Construction**  
DECREASED BY 3
- Wholesale and retail trade, repair of motor vehicles and motorcycles**  
INCREASED BY 84

## ECONOMIC ACTIVITY OF BUSINESSES



Number of manufacturing businesses per division	
Basic metals	3
Beverages	3
Chemicals and chemical products	10
Coke and refined petroleum products	2
Computer, electronic and optical products	9
Electrical equipment	4
Fabricated metal products, excluding machinery and equipment	73
Food products	12
Furniture	8
Leather and related products	1
Machinery and equipment not classified elsewhere	14
Motor vehicles, trailers and semi-trailers	8
Non-metallic mineral products	18
Other manufacturing	2
Paper and paper products	4
Printing and reproduction of recorded media	7
Repair and installation of machinery and equipment	5
Rubber and plastic products	22
Textiles	2
Wood and product of wood and cork, except furniture; manufacture of articles of straw and plaiting materials	24

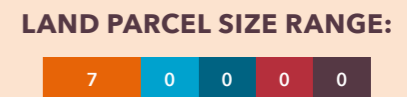
## PROPERTIES AVAILABLE

**70**  
VACANT LAND PARCELS

**7**  
VACANT BUILDINGS

RANGE OF SQM LAND:  
**193 000 m<sup>2</sup> - 237 000 m<sup>2</sup>**

RANGE OF SQM LAND\*:  
**14 000 m<sup>2</sup> - 19 000 m<sup>2</sup>**



● 0 - 4 999 m<sup>2</sup> ● 5 000 - 9 999 m<sup>2</sup> ● 10 000 - 49 999 m<sup>2</sup> ● 50 000 - 99 000 m<sup>2</sup> ● 100 000+ m<sup>2</sup>

\*Accommodation and food service activities; Agriculture, forestry and fishing; Arts, entertainment and recreation; Education; Electricity, gas, steam and air-conditioning supply; Financial and insurance activities; Information and communication; Other service activities; Water supply, sewerage, waste management and remediation activities

\*sqm of land parcel on which the business sits.